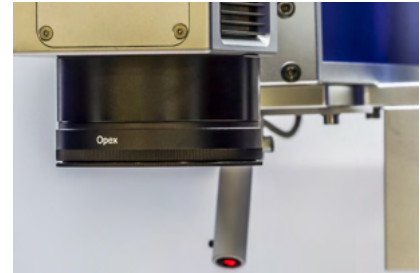
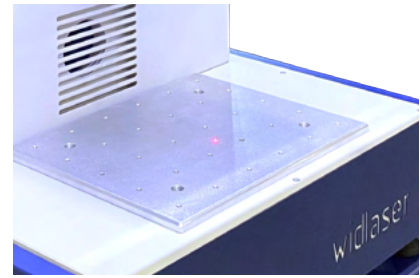
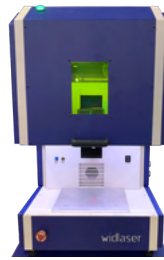
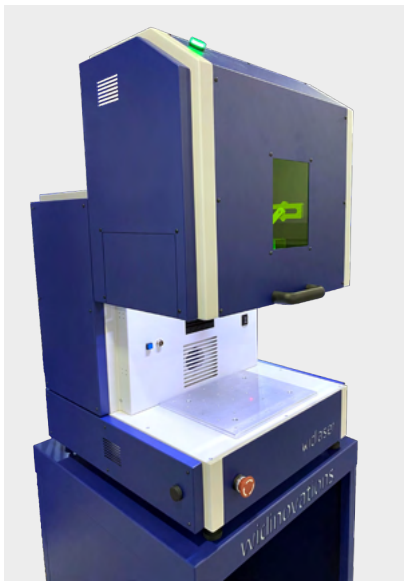


widlaser F150

V 5.0

Opex

widlinovations



Dimensions (W x L x H)

Equipment: 615 x 600 x 750 mm | **Crate:** 850 x 750 x 900 mm

Weight (kg)

Equipment: Aprox. 80 kg | **Crate:** Aprox. 120 kg

Power: AC 240V 50/60Hz

Type of Laser: Pulsed fiber laser

main features

- Functional working area: 150 x 150 mm
- Height of objects: up to 135 mm
- 1064nm wavelength pulsed fiber laser
- Power: 20W
- Smoke extraction system with purifier
- Motorized manual focus
- Door with laser protection window
- Lockable access sensors on all doors
- Minimum line size: 0.1 mm
- Speed: up to 4000 mm/sec.
- Resolution: up to 2000 DPI
- Software: EzCad 2
- File formats: Plt, Dxf, Ai, Bmp, Jpeg, Png, Tiff, Gif, among others
- Connectivity: USB

optional

- Power: 30W or 50W
- Lens: 100 x 100 mm
- Autofocus
- Adapter for cylindrical objects (rotating)
- Support cabinet
- Laser software: *Lightburn* (user-friendly)